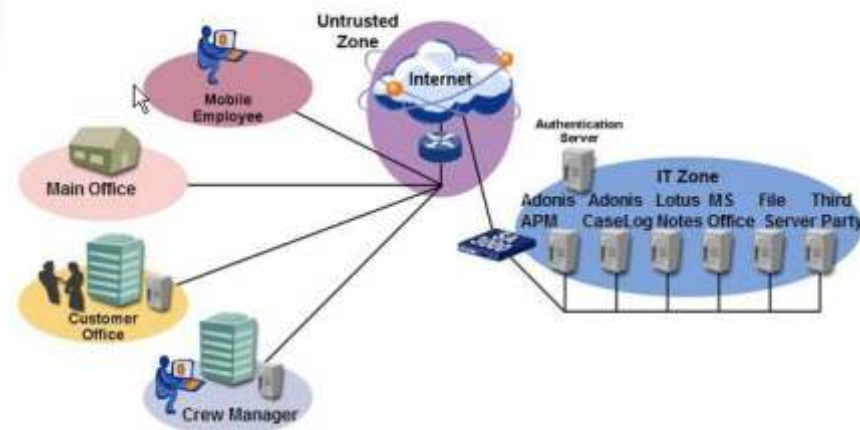




ADONIS SERVICE PROVIDER SOLUTION

Description:

The Adonis Service Provider Solution ASPS, gives the end user web access to one or more of the following services; ADONIS Personnel Manager, File Server Access, Adonis Case Log-database, Email, and standard Microsoft Office applications



To access these services, the end user needs to be connected to the Internet, and use the web browser to access the ASPS portal. This portal prompts for a user-id and password. After a successful login the system will, based on the role of the user, grant access to one or more services.

From a crew management point of view it is possible to give the customer / ship owners separate access to the Adonis Application Manager. The Adonis Control centre lets you define end-user access by vessel / client. This means that ship-owner only has access to his/her vessels. You can control down to field level the kind of information you want to expose the your clients.

The ASPS services:

ADONIS Personnel Manager:

Human Resource System handling, Crew Management and Payroll.

File Server Access:

File server access to a dedicated user directory, to save reports, create payment files. Combined with the Microsoft Office Service file server access server gives the end-user the possibility to save documents in dedicated user areas.

ADONIS Case Log Database:

Internal Support database to follow-up, support cases, program development, and user requests. One login account will be provided per company, normally a super user. The case log database is a tool which enables the end user to follow-up and communicate with the Adonis support / development teams

E-Mail access:

(Service planned at the end of 2005)

Microsoft Office:

Access to the most common office applications like MSWord, Excel, and Power point.
(Service planned at the end of 2005)

Third Party Software:

Hosting of other software packages, like accounting or maintenance systems.

Security

ASPS offerings include market leading Netscreen Secure Access SSL VPN appliance. The Netscreen Secure Access appliance sits behind our firewall but in front of our application servers. Netscreen Secure Access appliance allows end-users access to selected application services from any Internet connected device without the installation of additional software or changes to the network.

As long as the end user have their passwords or other credentials, they have everything they need, because the connection is completed via SSL, which is loaded on all standard web browsers. This makes SSL VPN the solution for mobile users, branch offices, and customers.

SSL VPNs take advantage not only of the Internet, but of certain protocols intrinsic to its use, specifically Secure Sockets Layer, or SSL. SSL was originally created for use in securing online financial transactions, and is one of the foundations of Web commerce. SSL is part of all standard Web browsers, so the client software that initiates secure data transit is already on the end user's device. Instead of relying upon the end user to have a configured client on a company laptop, SSL VPNs use SSL /HTTPS, available without additional downloads on all standard Web browsers, as a secure transport mechanism. The "tunnel" between the end user and the LAN happens at the application-layer, not the network layer. The use of SSL solves a variety of problems associated with IPSec VPNs, including:

- SSL does not need to be installed.

- SSL does not need to be configured.

- SSL is available in standard Web browsers, so users can gain access via just a web browser.

- SSL is an application layer protocol, not a network layer protocol, so it has no NAT or firewall traversal issues.

- SSL is familiar to most users, even those without a technical background.

The result is that analysts at META Group have predicted that 80% of remote access will take place over SSL by 2007.

Guaranteed uptime:

To guarantee our customers the highest percentage of uptime, meaning the system is available at any time the following steps has been taken:

Clustered application and database servers (RAID)

UPS secured power supply for all vital parts.

Emergency power generator.

Disaster Site which may be activated within less than 3 hours.

Backup:

All data is secured through an automatic multiple media backup system.

New versions

The systems are upgraded by our staff once a version has been officially released.

